

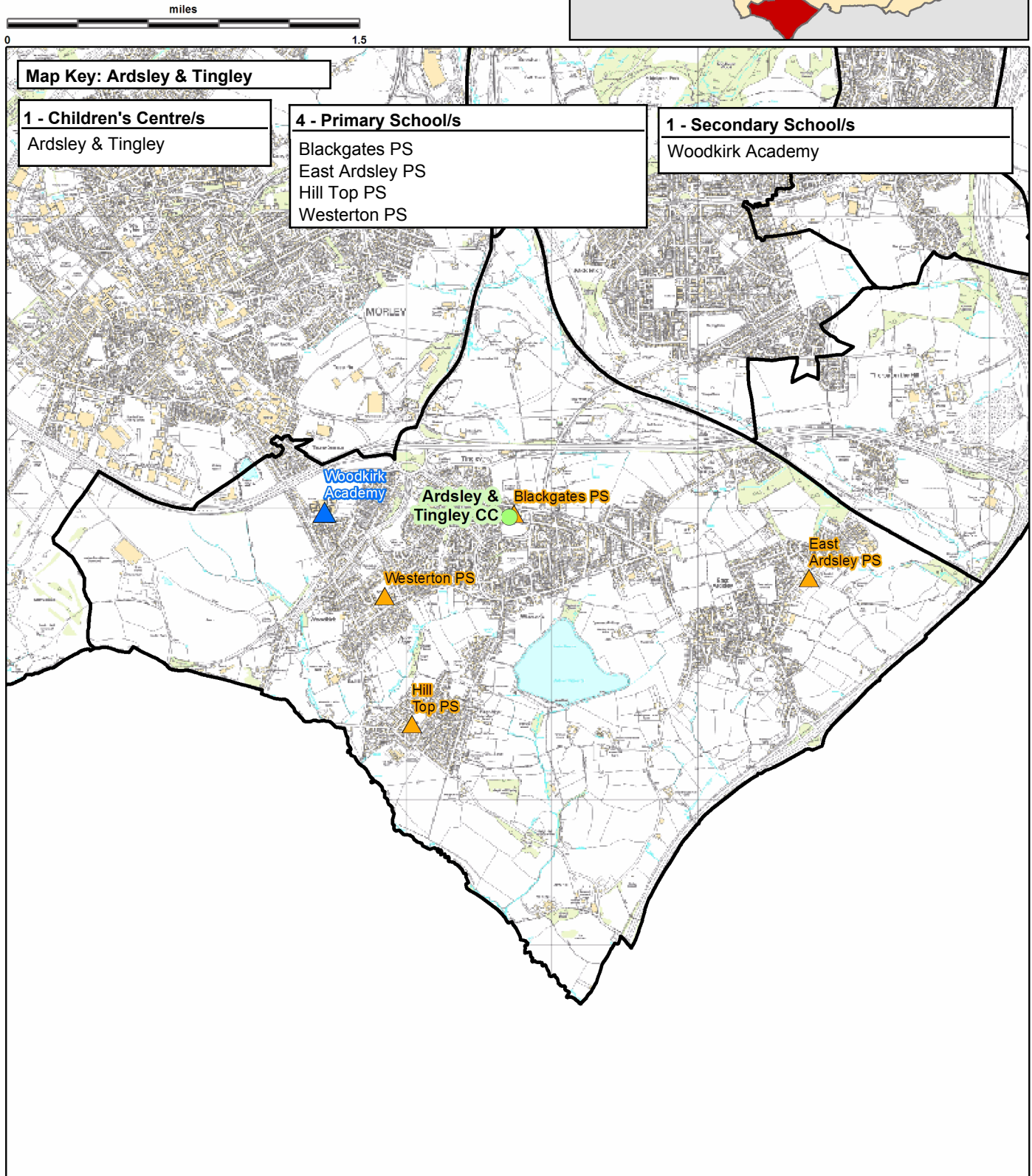
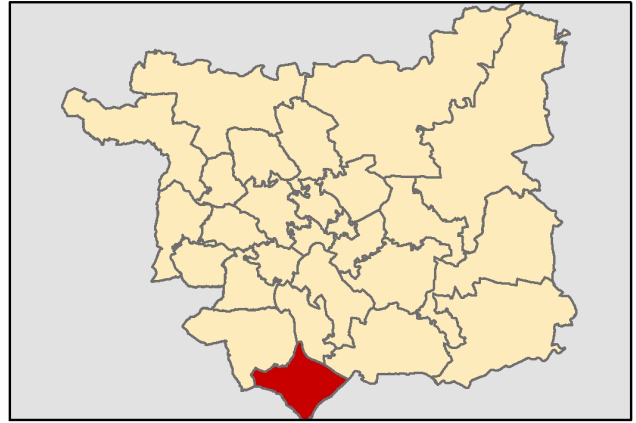
Ardsley & Tingley

This report was produced by the Children's Performance Service on 01/06/2012. The information in these overviews are based on the cluster data profile version 5.12.

For more information telephone 0113 39 50701 or email educ.pmi@leeds.gov.uk or visit:

www.leedsinitiative.org/ClusterDataProfile.aspx

The map to the right gives the position of the cluster in Leeds. The map below shows the location of the Children's Centres, Primary and Secondary Schools in the cluster.



Cluster Overviews key**Data Period:**

The codes in the key to the right are for the time periods that the data in these reports cover. They will appear next to all data sets.

Academic Year

Calendar Year

Financial Year

Snapshot

Other

DP:A**DP:C****DP:F****DP:S****DP:O****Cluster Overview**

Data Source: January School Census					DP: S
Primary Schools	DFE	Total Number on roll			
		2010	2011	2012	
Blackgates Primary School	3918	324	325	347	
East Ardsley Primary School	2504	363	378	377	
Hill Top Primary School	2292	243	249	239	
Westerton Primary School	2297	730	729	736	
Total		1660	1681	1699	

Data Source: January School Census					DP: S
Secondary Schools	DFE	Total Number on roll			
		2010	2011	2012	
Woodkirk Academy	4105	1851	1825	1820	
Total		1851	1825	1820	

Data Source: Children's Services - Feb 2012		DP: S
Children's Centre reach area registration for families of children aged 0-5		% Registered
Cluster		61.73
Wedge		61.66
Leeds all		60.23

Data Source: Children's Services	
Children's Centre	Ofsted ID
Ardley & Tingley	

Data Source: The office of National Statistics population mid-year estimates										DP: S
Population Estimates	0-15			Working Age			60/65+			
	2008	2009	2010	2008	2009	2010	2008	2009	2010	
Cluster	3152	3072	3022	10738	10724	10723	2748	2835	2902	
Wedge	47897	48099	48486	176361	180282	184227	45628	46348	47187	
Leeds all	132741	133396	134493	516578	522769	531036	129937	131536	133240	

Data Source: NHS Leeds													DP: S
Under Fives	September 2010						September 2011						
	0-1	1-2	2-3	3-4	4-5	Total	0-1	1-2	2-3	3-4	4-5	Total	
Cluster	180	179	162	194	181	896	169	185	188	173	189	904	
Wedge	3707	3509	3422	3243	3351	17232	3579	3695	3530	3416	3275	17495	
Leeds all	10202	9848	9478	9195	9113	47836	9996	10173	9787	9438	9319	48713	

Data Source: January School Census													DP: S
Percentage of pupils who are:	Black and Minority Ethnic			English as an Additional Language			Free School Meal Eligible			Special Education Needs			
	2010	2011	2012	2010	2011	2012	2010	2011	2012	2010	2011	2012	
Primary													
Cluster school	6.3	7.5	9.0	1.7	2.1	2.8	9.9	10.2	11.4	7.5	9.3	9.2	
Cluster residence	5.2	6.6	8.2	1.6	2.0	2.1	10.6	11.4	12.3	8.6	10.5	9.7	
Wedge school	13.1	14.1	16.1	8.8	9.5	10.2	21.4	22.2	22.2	19.0	18.6	18.2	
Total primary	23.6	24.8	26.4	15.8	16.5	17.1	21.5	22.2	22.0	17.8	17.8	17.4	
Secondary													
Cluster school	10.8	11.4	13.0	6.6	7.1	7.4	9.2	9.5	10.6	9.2	9.3	9.8	
Cluster residence	4.2	3.9	4.1	2.2	1.9	1.7	7.0	6.6	7.7	10.1	10.7	10.8	
Wedge school	7.5	8.1	9.0	4.3	4.8	5.5	19.1	19.2	19.1	22.0	19.3	21.4	
Total secondary	18.6	19.4	20.4	10.4	10.0	11.1	19.0	19.4	19.5	21.4	20.4	19.0	
Leeds all	21.4	22.5	23.9	13.4	13.7	14.6	20.6	21.1	21.1	20.0	19.6	18.7	

Data Source: HM Revenue and Customs - taken on 31st August 2007-2009											DP: S
Child Poverty	Number of children (under 16) in families in receipt of CTC or IS/JSA			Number of children (all ages) in families in receipt of CTC or IS/JSA			Number of children in poverty, by age of youngest child, 2009				
	2007	2008	2009	2007	2008	2009	0-4	5-10	11-15	16-19	
Cluster	285	315	360	305	345	400	190	120	70	20	
Wedge	10885	10860	11645	12055	12130	13000	7265	3380	1805	550	
Leeds all	30235	29700	31030	33690	33300	34965	18720	9640	5115	1490	

Data Source: Children's Services - Summer Term 2011					DP: S
Nursery Education Grant Claims	Number of eligible children	Number of: Claims by childcare setting			
			Resident Claims	Non Resident Claims	
Cluster	270	295	228		67
Leeds all	14500	13851	9704		4148

Data Source: January School Census and 2010 Index of Multiple Deprivation										DP: S
IMD % of pupils resident in most deprived areas	3% most deprived			10% most deprived			20% most deprived			
	10	11	12	10	11	12	10	11	12	
Primary										
Cluster school	0.1	0.4	0.2	1.4	1.5	1.3	2.2	2.4	2.5	
Cluster residence	0.0	0.0	0.0	0.0	0.0	0.0	0.0	0.0	0.0	
Wedge school	7.7	8.1	7.9	26.4	25.6	26.0	32.3	34.4	34.8	
Total primary	8.2	8.4	8.3	28.1	27.1	27.3	36.6	37.6	38.0	
Secondary										
Cluster school	0.9	1.0	1.3	3.1	3.5	4.1	5.7	8.8	9.4	
Cluster residence	0.0	0.0	0.0	0.0	0.0	0.0	0.0	0.0	0.0	
Wedge school	6.5	7.7	7.8	22.6	22.4	22.8	27.9	30.4	30.7	
Total secondary	7.0	7.5	7.6	24.0	23.5	23.8	32.3	33.5	33.6	
Leeds all	7.7	8.0	8.0	26.4	25.7	25.9	34.8	35.9	36.2	

Data Source: January School Census and CACI ACORN											DP: S
KEY: Wealthier Achievers(WA), Urban Prosperity (UP), Comfortably Off (CO), Moderate Means (MM), Hard Pressed (HP)											
Percentage of pupils in each ACORN category	2011					2012					
	WA	UP	CO	MM	HP	WA	UP	CO	MM	HP	
Primary											
Cluster school	31.9	1.1	38.2	9.3	19.1	31.3	0.8	38.7	8.5	20.0	
Cluster residence	35.7	0.8	31.9	9.3	21.8	35.5	0.7	32.0	9.1	22.4	
Wedge school	12.5	1.1	31.1	17.7	36.9	12.2	1.3	30.7	17.9	37.3	
Total primary	15.4	5.9	27.8	15.8	34.3	15.0	6.0	27.7	15.9	34.6	
Secondary											
Cluster school	30.8	0.9	34.0	15.4	18.6	29.1	0.5	34.5	15.6	19.7	
Cluster residence	41.5	1.0	30.4	8.0	18.8	39.8	0.7	30.6	8.9	19.8	
Wedge school	14.4	0.8	32.9	16.0	35.3	13.9	0.8	32.9	16.0	35.6	
Total secondary	17.1	5.2	29.7	14.7	32.5	16.9	5.3	29.8	14.7	32.6	
Leeds all	16.1	5.6	28.5	15.4	33.6	15.8	5.7	28.5	15.4	33.8	

Data Source: DWP information Directorate													DP: F
KEY: Job Seekers Allowance (JSA), Incapacity Benefit (IB), Lone Parent Benefit (LPB), Total Out of Work (TOW)													
Unemployment Percentage of working age people in receipt of:	2009				2010				2011				
	JSA	IB	LPB	TOW	JSA	IB	LPB	TOW	JSA	IB	LPB	TOW	
Cluster	2.7	5.0	1.1	8.9	2.5	5.0	0.9	8.7	2.6	4.8	0.8	8.5	
Wedge	4.8	6.6	2.0	13.9	4.5	6.4	1.9	13.4	4.5	6.4	1.7	13.2	
Leeds all	4.4	5.9	1.8	12.6	4.3	5.8	1.7	12.3	4.2	5.8	1.5	12.1	

Data Source: AXCIOM Lifestyle Survey 2009-2011													DP: S					
	Property type by %									Length of residence by %								
	Owned			Rented - Council			Rented - Private			Less than 1 year			2-5 years			More than 5 years		
	09	10	11	09	10	11	09	10	11	09	10	11	09	10	11	09	10	11
Cluster	79.4	79.7	16.2	12.3	12.6	60.4	8.3	7.7	0.2	7.8	3.2	5.3	24.2	25.4	19.1	68.0	71.4	75.6
Wedge	62.1	62.3	39.5	25.0	24.7	53.4	12.9	13.0	0.0	8.0	6.3	4.7	20.9	20.9	19.4	71.1	72.8	75.9
Leeds all	61.5	61.6	39.0	24.0	23.9	61.2	14.5	14.6	0.0	7.9	8.1	5.1	20.3	20.0	18.5	71.9	71.9	76.4
Income by %	<10k			10-20k			20-30k			30-40k			40-50k			50k+		
	09	10	11	09	10	11	09	10	11	09	10	11	09	10	11	09	10	11
	Cluster	11	13	9	15	17	12	13	13	18	18	27	15	17	16	27	27	15
Wedge	20	19	17	21	20	23	17	15	17	16	19	16	13	14	13	13	14	13
Leeds all	20	18	18	21	20	23	16	15	16	15	18	17	14	13	13	14	16	14
Struggling with payments by %	Food			Bills			Mortgage											
	09	10	11	09	10	11	09	10	11									
	Cluster	9.3	8.2	5.5	7.9	9.4	4.8	0.0	1.7	0.9								
Wedge	17.1	9.9	6.4	16.3	11.8	8.4	2.5	2.5	1.8									
Leeds all	15.9	10.8	6.4	16.3	13.0	8.3	2.2	2.2	1.7									

Being Healthy

Data Source: NHS Leeds										DP: Various - Listed with each report					
Birth Data	3 year rolling average of births below 2.5kg						Number and rate of conceptions per 1000 15-17 year olds								
	% low birth weight babies						Number				Rate				
	2006-08		2007-09		2008-10		June to May		2008-09		2009-10		2008-09		2009-10
Cluster	4.9		5.8		6.0		Cluster	23		25		34		37	
Wedge	7.7		7.7		7.6		Wedge	472		459		48		48	
Leeds all	7.8		7.8		7.6		Leeds all	1220		1145		45		43	
DP: C	% of women receiving a health and social care needs assessment at 12 weeks as a percentage of live births in the same year						DP: F	% Initiating breastfeeding April to March				% breastfeeding at 6 weeks April to March			
	2009		2010		2011			2009-10		2010-11		2009-10		2010-11	
	Cluster	86.5		88.4		87.8		57.6		59.0		28.8		30.7	
Wedge	82.4		82.7		84.9		62.1		59.8		34.9		34.7		
Leeds all	81.6		82.9		84.0		67.6		65.1		40.4		39.3		
DP: C	Number of emergency admissions by age group 2007-11						Number of emergency admissions to hospital for injury, poisoning and certain other consequences of external causes by age group								
	0-4		5-10		11-18		0-4		5-10		11-18				
	Cluster	523		154		339		61		48		122			
Wedge	10977		3008		6552		1278		922		2455				
Leeds all	29793		8247		18194		3419		2522		6711				
Immunisation Data	% of 2 year olds receiving vaccinations in quarter 3 for:						% of 5 year olds receiving vaccinations in quarter 3 for:								
	Diphtheria			MMR			Diphtheria			MMR					
	09-10	10-11	11-12	09-10	10-11	11-12	09-10	10-11	11-12	09-10	10-11	11-12			
Cluster	98	93	100	59	90	98	100	94	98	47	86	98			
Wedge	96	96	98	84	86	95	97	96	97	91	93	97			
Leeds all	96	96	97	86	88	94	95	94	96	91	91	95			

Data Source: National Child Measurement Programme												DP: A		
Obesity	Obesity in Reception						Obesity in Year 6							
	% Obese			% Obese or overweight			% Obese			% Obese or overweight				
	08-09	09-10	10-11	08-09	09-10	10-11	08-09	09-10	10-11	08-09	09-10	10-11		
Cluster	6.7	8.4	8.4	20.6	20.1	19.1	17.8	19.6	21.1	32.8	34.9	38.4		
Wedge	9.0	10.2	9.6	20.8	23.4	23.9	20.1	20.0	20.6	34.7	35.0	34.8		
Leeds all	9.4	10.2	9.7	21.7	23.7	23.4	20.3	20.7	20.0	34.3	35.1	34.3		
Obesity	Obesity in Reception						Obesity in Year 6							
	3 year average 2008-2011						3 year average 2008-2011							
	% Obese			% Obese or overweight			% Obese			% Obese or overweight				
Cluster	7.79			19.92			19.48			35.27				
Wedge	9.61			22.74			20.24			34.83				
Leeds all	9.77			22.96			20.32			34.56				

Stay Safe

Data Source: Children's Services					DP: Various - Listed with each report							
Number of LAC and Child protection plans	The number of children and young people looked after by the Local Authority - March						The number of children with child protection plans - March					
	based on home address before coming into care			based on placement address					DP: S			
	DP: S	2011	2012	2012	2011	2012						
Cluster	12	10	21	7	12							
Wedge	0	505	442	0	367							
Leeds all	1439	1454	1454	947	1019							
Number of Common Assessments (CAFs)					Social Care			Social Care Referrals		Requests for Service		
DP: C	2008	2009	2010	2011	DP:A	2009	2010	2011	DP:S	Feb 11 - Jan 12		
Cluster	SUPP	15	9	6	Cluster	173	161	153		328		
Wedge	128	234	410	313	Wedge	5505	5001	5218		11184		
Leeds all	457	849	1115	892	Leeds all	14248	13784	14000		30539		
Number of Child and Adolescent Mental Health Services referrals												
DP: S	aged 11 and under				aged 12-18				total referrals			
September-October	2009-10		2010-11		2009-10		2010-11		2009-10		2010-11	
Cluster	3000		25		56		39		86		64	
Wedge	649		421		973		555		1622		976	
Leeds all	1767		1124		2976		1730		4743		2854	

Make a positive Contribution

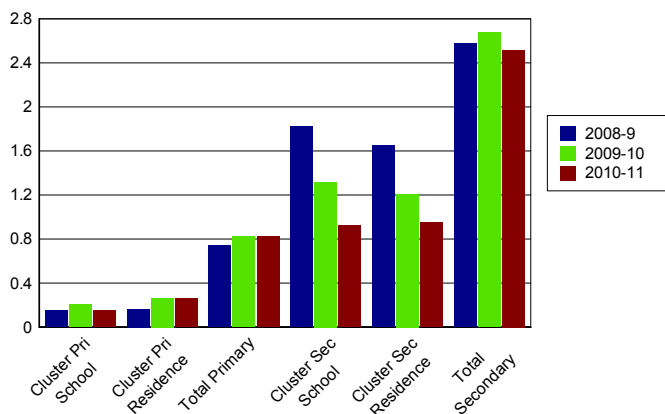
Data Source: West Yorkshire Police										DP: C	
Property Crime	Burglary dwelling		Burglary elsewhere		Criminal damage		Robbery		Vehicle crime		
	10	11	10	11	10	11	10	11	10	11	
Cluster	106	64	114	40	159	123			106	116	
Wedge	2555	1992	2378	2038	5038	3731	415	301	3140	2801	
Leeds all	9508	8487	5681	5408	13599	10426	1297	1226	9168	7971	
Personal Crime					Drug Offences		Theft from person		Violent crime		
					10	11	10	11	10	11	
Cluster					5	23			106	121	
Wedge					563	1049	1382	2023	5322	5047	
Leeds all					1248	3192	2235	3034	11233	10896	
Domestic Violence Incidents	Number of incidents recorded with a domestic qualifier or disposition code on the Storm WYP incident recording system - 2011										
Cluster	145										
Wedge	5227										
Leeds all	14525										

Data Source: Youth Offending Service										DP: A	
Youth Offending	Number of Offenders					Number of Offences					
	07-08	08-09	09-10	10-11	07-08	08-09	09-10	10-11			
Cluster	14	12	14	15	26	22	18	19			
Wedge	818	610	484	500	1943	1418	946	913			
Leeds all	2741	2166	1522	1511	6331	4883	3134	3150			
April 2010 - March 2011 Number of offences by young offenders											
	Burglary	Breaches	Criminal Damage	Drugs Offences	Motoring and Vehicle	Other	Public Order	Theft and handling	Violence against the person		
Cluster	SUPP	SUPP	SUPP	SUPP	SUPP	SUPP	SUPP	SUPP	SUPP		
Wedge	81	80	91	59	53	104	86	188	171		
Leeds all	291	270	328	204	218	358	282	612	587		

Data Source: School Census												DP: A
Attendance and persistent absence by percentage	Attendance			Authorised Absence			Unauthorised Absence			Persistent Absence 15%		
	08-09	09-10	10-11	08-09	09-10	10-11	08-09	09-10	10-11	08-09	09-10	10-11
Primary												
Cluster school	95	95	95	5	5	5	0.2	0.2	0.2	3.0	2.9	2.8
Cluster residence	95	95	95	5	5	5	0.2	0.3	0.3	3.1	3.2	3.2
Total primary	94	94	95	5	5	4	0.7	0.8	0.8	5.9	5.5	4.3
Secondary												
Cluster school	93	93	94	5	6	5	1.8	1.3	0.9	8.2	10.2	8.5
Cluster residence	94	93	94	5	6	5	1.7	1.2	1.0	7.9	9.6	8.8
Total secondary	92	92	92	6	6	5	2.6	2.7	2.5	13.0	13.1	11.2

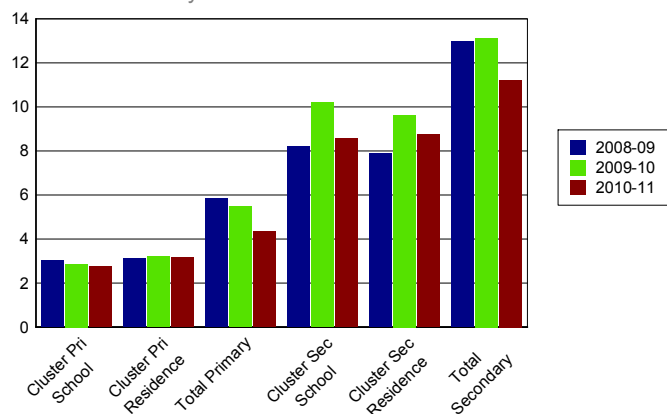
% Unauthorised Absence

2008-2011



% Persistent Absence

by 15% measure 2008-2011



Data Source: Children's Services												DP: A
Exclusions	Fixed Term Exclusions						Permanent Exclusions					
	Number			Rate per thousand			Number			Rate per thousand		
Primary	08-09	09-10	10-11	08-09	09-10	10-11	08-09	09-10	10-11	08-09	09-10	10-11
Cluster school	0	2	1	0.0	1.2	0.6	0	0	0	0.0	0.0	0.0
Cluster residence	0	2	5	0.0	1.2	3.1	0	0	0	0.0	0.0	0.0
Total primary	467	371	455	7.7	6.0	7.3	2	2	2	0.0	0.0	0.0
Secondary												
Cluster school	143	119	106	78.9	64.3	58.1	1	0	0	0.6	0.0	0.0
Cluster residence	82	86	75	83.9	91.6	77.9	0	0	0	0.0	0.0	0.0
Total secondary	4350	4286	3806	93.6	93.1	83.2	52	57	44	1.1	1.2	1.0

Enjoy and Achieve

Data Source: Keypas and DFE performance tables
DP: A
Foundation Stage Profile Data The percentage of pupils achieving a good level of development (78+ points overall and 6+ points in all PSE and CCL strands)

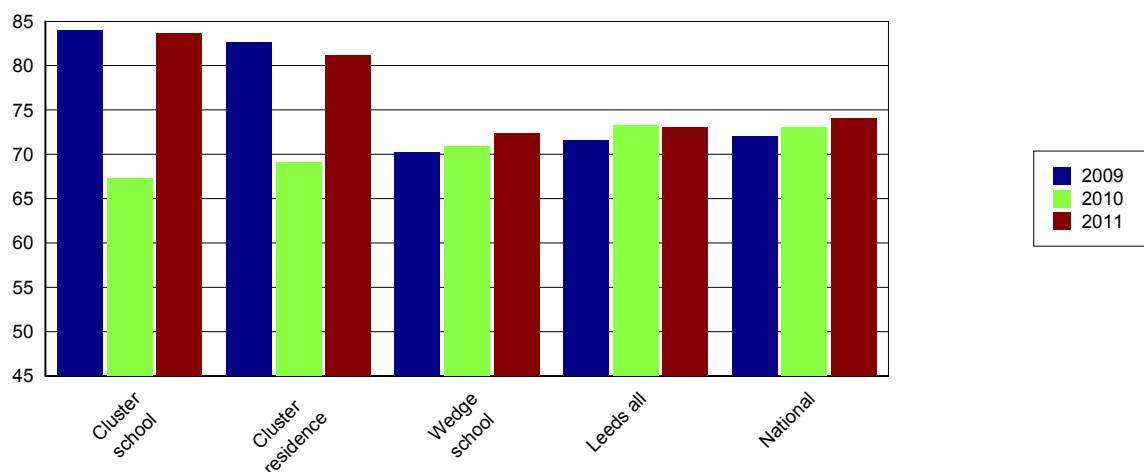
	2008	2009	2010	2011
Cluster school	57	66	56	66
Cluster residence	57	60	55	65
Leeds all	47	51	53	58

KS2 Data DP: A	English 4+			English 5+			Maths 4+			Maths 5+			English & Maths 4+		
	09	10	11	09	10	11	09	10	11	09	10	11	09	10	11
Cluster school	88	80	89	32	29	38	87	75	88	40	34	45	84	67	84
Cluster residence	87	78	89	30	31	38	86	77	86	39	36	46	83	69	81
Wedge school	78	78	81	23	27	27	76	77	78	30	29	28	70	71	72
Leeds all	79	79	81	28	31	32	77	79	78	33	31	32	72	73	73
National	80	80	82	29	33	29	79	79	80	35	34	35	72	73	74

KS2 Data - Expected progress	Made 2 levels of progress in English		Made 2 levels of progress in Maths	
	Number of pupils	Percentage	Number of pupils	Percentage
Cluster school	171	90.5	175	92.6
Wedge school	2294	88.4	2190	84.4
Leeds all	6334	88.6	6087	85.0
National		84.0		83.0

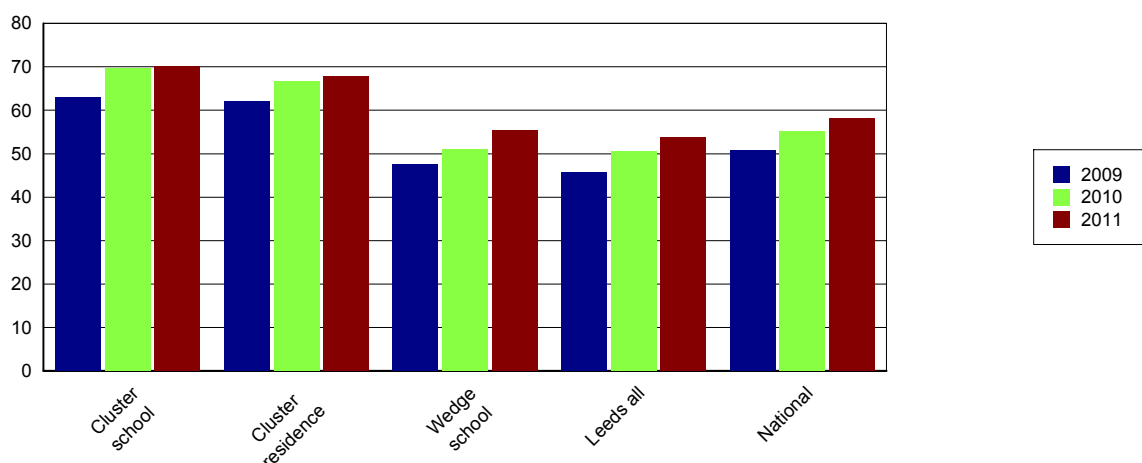
Percentage of English and Maths

Level 4+



Data Source: EPAS and DFE performance tables											DP: A		
The results are for GCSE & equivalent qualifications. The calculation of achieving no qualifications includes all qualifications													
KS4 Data	% of 5+ A*-C			% of 5+ A*-C inc Eng & Maths			% English Baccalaureate	% of 5+ A*-G			% achieving no qualifications		
	09	10	11	09	10	11		09	10	11	09	10	11
Cluster school	69	84	84	63	70	70	7	99	99	98			1
Cluster residence	68	79	86	62	67	68	8	97	97	98	0	1	1
Wedge school	68	80	85	47	51	55	9	92	95	96	1	1	1
Leeds all	67	76	82	46	51	54	13	91	94	94	2	2	1
National	70	76	81	51	55	58	15	94	95	95			1

Percentage 5 A*-C Including English and Maths



Achieve Economic Well Being

Key: Not in Employment, Education or Training (NEET), In Employment, Education or Training (EET), in Full time Education (FE)													
Data Source: November destination survey													DP: S
NEET/FE		Number of NEET			% NEET			Number of FE			% FE		
		2009	2010	2011	2009	2010	2011	2009	2010	2011	2009	2010	2011
Cluster school	Year 11	14	12	7	5	4	3	268	268	238	88	91	90
	Year 12	SUPP	SUPP	SUPP	SUPP	SUPP	SUPP	151	153	125	94	96	98
	Year 13	SUPP	8	SUPP	SUPP	6	SUPP	80	103	125	78	75	84
Cluster residence	Year 11	8	5	7	4	3	3	165	178	191	87	91	91
	Year 12	SUPP	SUPP	SUPP	SUPP	SUPP	SUPP	108	103	7	93	95	100
	Year 13	SUPP	SUPP	SUPP	SUPP	SUPP	SUPP	59	74	87	82	73	85
Leeds all	Year 11	646	393	357	8	5	5	6703	7194	6564	80	87	87
	Year 12	132	67	115	3	2	3	3436	3476	3550	90	93	93
	Year 13	121	135	120	5	4	4	2067	2350	2593	78	76	84

Data Source: Integrated Youth Support Service										DP: O
16-18 NEET and EET Nov 2011 to Jan 2012	NEET		EET		Not Known		Other Activity			
	Number	%	Number	%	Number	%	Number	%		
Cluster	19	3.4	538	95.7	SUPP	SUPP	SUPP	SUPP		
Wedge	589	7.3	7284	90.7	173	2.2	21	0.3		
Leeds all	1538	7.0	20170	91.7	343	1.6	58	0.3		

Please Note: Leeds totals for 16-18 NEET will not match publicised totals as published totals include a proportion of those whose status has expired